



The new Europass

Digital Credentials



New Europass Overview



**Europass
e-portfolio**



**Information on
Skills and
Qualifications**



Interoperability



**Digitally Signed
Credentials**

European Digital Credentials Infrastructure (EDCI)

Functions



Identify

Learners who
will be
awarded the
credential



Issue

credentials
and send them
to their owners



Store

credentials
securely in a
single online
or offline
wallet



Verify

if the credential
is authentic,
valid and
issued by an
accredited
organisation



Share

the information
in the credential
with any other
person or
organisation
with just a click

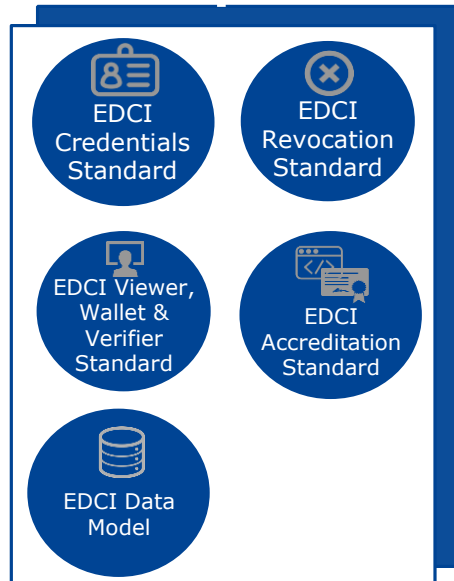
European Digital Credentials Infrastructure (EDCI)



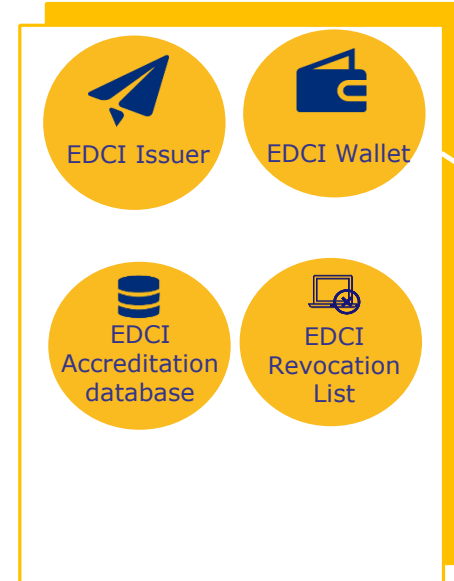
eIDAS



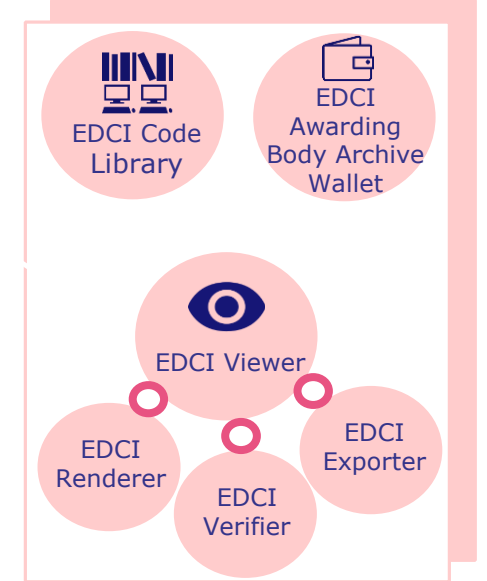
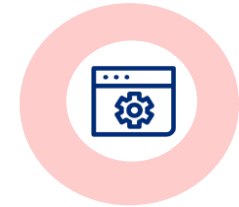
Standards



Services

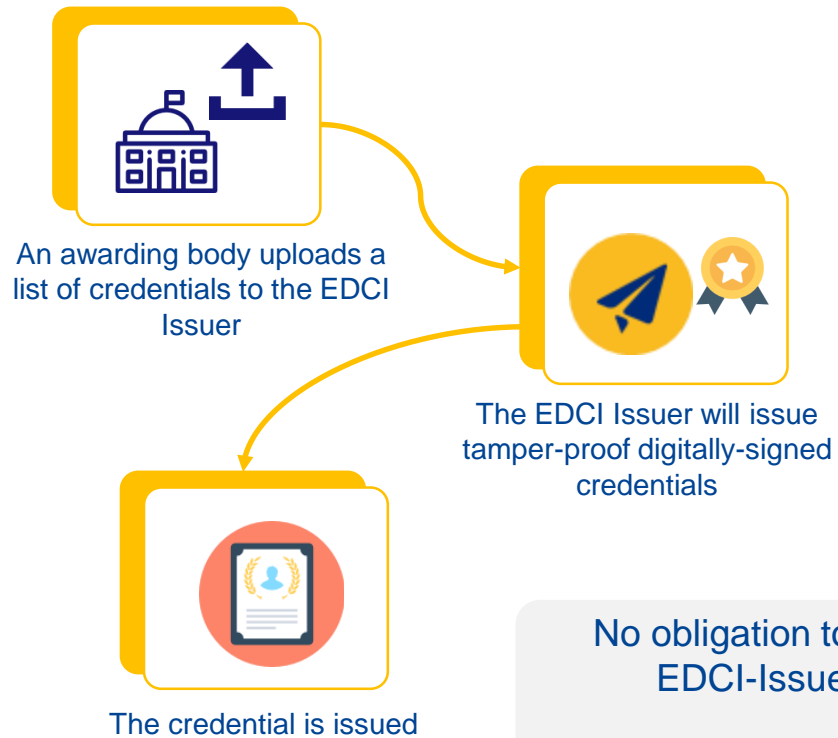


Software



Scenarios for the implementation of the EDCI

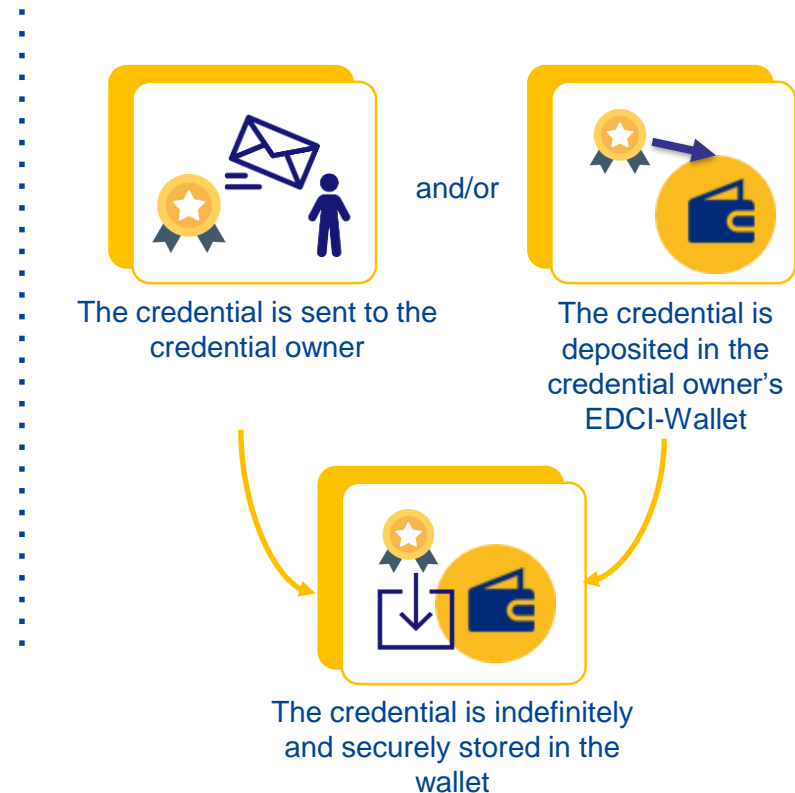
Issue



No obligation to use EDCI-Issuer

Any software can be used to issue standard-compliant credentials

Store



No obligation to use EDCI-Wallet.

Credential-owner can run a wallet on their own device, or obtain one from any provider.

Scenarios for the implementation of the EDCI

Verify (automatic verification by wallet)



The EDCI Accreditation database automatically verifies accreditation of awarding body



Embedded security features automatically verify the credential is authentic



The identity of the credential owner is automatically matched with the credential



The credential is automatically verified every time it is accessed in the EDCI wallet

Share



The credential owner shares a link to the credential in their EDCI-wallet

No obligation to use EDCI-Wallet.

Link can be shared to any cloud-based wallet.

European Digital Credentials Infrastructure (EDCI)

Scope



Recognise learning outcomes achieved in **formal, informal and non-formal** settings



Qualifications (including *Europass* supplements)



Learning credential



Recognition statements



Free to foster easy and flexible adoption, **hosted model** (use COM services) or **self-sovereign model** (implement in local infrastructure)



Secure personal data



Based on **open standards**; built as a **verifiable claim**

QUESTIONS?



Contact: William.OKEEFFE@ec.europa.eu

Project Website: <https://ec.europa.eu/futurium/en/europass>